



Feidhmeannacht na Seirbhíse Sláinte
Health Service Executive

Report on Regional Children's and Young People's Nurse Education Group HSE West, Midwest & Northwest 2017-2019

Report prepared by:
Ms. Mairéad Loftus, Nurse Tutor, Centre of Nurse and Midwifery Education
Mayo/Roscommon Project Lead on behalf of
The Regional Children's and Young People's Nurse Education Group
HSE West/Midwest/Northwest

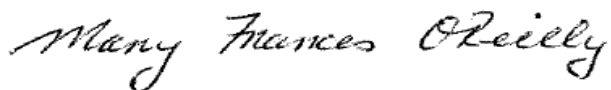
Foreword

I am delighted to present this Report on the Regional Children's and Young People's Nurse Education Group HSE West/Midwest/Northwest hereafter referred to as the Regional Group. This report outlines the work and achievements of this Regional Group since its establishment in 2017.

The work of this group has resulted in a series of recommendations which will improve the nursing care delivered to children and young people through the provision of education to enhance practice within the region.

It is notable that this is the first project of its kind nationally, and one of the critical success factors identified is the local, regional and national connectivity which has been established and continues to evolve, both within nursing and across disciplines and agencies, in keeping with the ethos of *Slaintecare (2017)*. This reflects the vision of The Health Service Executive Ireland (2015) *The HSE National Model of Care for Paediatric Health Services in Ireland*. This was further enabled through collaboration between the Centres of Nurse and Midwifery Education in the region, together with service providers.

I would like to thank the members of the Regional Group (listed on Appendix 4). Particular thanks are due to the Project Lead, Mairéad Loftus, Nurse Tutor, CNME Mayo/Roscommon, for her vision, support and expertise ensuring the sustainability and success of this project.



Mary Frances O'Reilly

Director, Nursing and Midwifery Planning and Development Unit

HSE West/MidWest

List of Abbreviations

CAMHS	Children and Adolescent Mental Health Services.
CCLA	Care of the child with a life limiting condition.
CCNE	Centre for Childrens Nurse Education.
CHI	Childrens Health Ireland was established under the Children’s Health Act 2018 and is responsible for services currently provided by Dublin’s three children’s hospitals and the new children’s hospital.
CNME	Centre of Nurse and Midwifery Education provide accessible, quality assured education and training programmes, primarily for registered nurses/midwives, based on identified service need and organisational objectives and priorities.
DCYA	Department of Children and Youth Affairs role is to lead the effort to improve outcomes for children and young people in Ireland.
HSE	Health Service Executive (Ireland) provides public health and social care services to everyone living in Ireland.
HSEland	A central source of high-quality online training and learning and development opportunities that enables staff to develop new personal and professional skills, update and refresh existing skills and enables them to take responsibility for their own learning interventions.
LMS	Learning management system is a software application for the administration, documentation, tracking, reporting, and delivery of educational courses, training programs, or learning and development programs.
MCAN	Managed Clinical Academic Network is a collaborative approach to providing care with hospitals and specialities working together improving quality, outcomes and access.

NMBI	Nursing Midwifery Board of Ireland is the organisation with legal responsibility for processing applications to join the Register of Nurses and Midwives.
NMPDU	Nursing and Midwifery Planning Development Unit support services through promotion of professional development and standards of care, building capacity and leadership within nursing and midwifery and fostering workforce development.
ONMSD	Office of the Nursing and Midwifery Services Director role is to strategically lead and support nurses and midwives to deliver safe, high-quality, person-centred care.
QCM	Nursing and Midwifery Quality Care Metrics: A national initiative to enable measurement for improvement in the Health Service Executive (Ireland)
SCNN	Senior Children's Nursing Network is a national network of senior children's nurses whose purpose is to positively influence the direction and delivery of children's healthcare in Ireland.
Tusla	Child and Family Agency dedicated state agency responsible for improving well-being and outcomes for children.
W & C	Women's and Children's Directorate

Table of Contents

FOREWORD.....	3
LIST OF ABBREVIATIONS.....	4
BACKGROUND.....	7
CONTEXT.....	7
AIM OF REPORT.....	9
PURPOSE OF THE GROUP.....	9
OBJECTIVES OF THE GROUP.....	9
GOVERNANCE.....	10
MEMBERSHIP OF THE GROUP.....	11
RESPONSIBILITIES OF PROJECT LEAD.....	11
RESPONSIBILITIES OF THE GROUP MEMBERS.....	12
ACTIVITY 2017-2019.....	12
OPPORTUNITIES & CHALLENGES.....	13
OPERATIONAL PLAN 2020.....	14
RECOMMENDATIONS.....	16
CONCLUSION.....	17
ACKNOWLEDGMENTS.....	18
APPENDIX 1:TERMS OF REFERENCE.....	19
APPENDIX 2: CONTINUING PROFESSIONAL DEVELOPMENT SUITE.....	21
APPENDIX 3: GROUP PRODUCTIVITY REPORTS CNMES.....	23
APPENDIX 4: GROUP MEMBERSHIP 2017-2019.....	30
REFERENCES.....	32

Background

In quarter four (Q4) 2016 in response to stakeholder requests, the Centre of Nurse and Midwifery Education (CNME) Mayo/Roscommon identified a significant gap in education for nurses in the community engaged in the care of children with complex healthcare needs. The CNME Mayo/Roscommon reviewed the request and liaised both locally, regionally and nationally and reviewed international trends. It became apparent that this was not just a local issue to Mayo/Roscommon, that it was a service need across the region.

Following mapping of resources and in order to meet this regional service need the CNME Mayo/Roscommon in collaboration with CNMEs in Donegal, Sligo, Galway and Limerick established a working group with education and service representatives. The aim of the group was to develop a suite of programmes for the care of the child with complex healthcare needs in the community. At the outset linkages were developed at a national level with a number of key stakeholders including the Children's Hospitals Dublin – Temple Street Children's University Hospital, Our Lady's Children's Crumlin, National Children's Hospital Tallaght, The Centre of Children's Nurse Education (CCNE), Public Health Nursing, National Programme for Paediatrics and Neonatology. This collaboration and combining of resources created a capacity and capability within the region to meet this educational need for nurses.

In this report, children refer to all children from birth to the eve of 16th birthday unless otherwise stated (HSE 2018). Young person refers to any person 15-24 years (DCYA 2014).

Context

The group's inaugural meeting took place in February 2017. Initially, the group identified from the cross regional training needs analysis 5 stand-alone programmes, with 3 being identified as a priority to meet the most critical needs of the region in the management of children with complex healthcare needs in the community. The programmes identified were care and management of the child with complex healthcare needs in the community with (1) a neurological condition (2) non-invasive ventilation, airvo and cough assist, (3) enteral feeding. Two further programmes were identified (4) continence and enuresis management of the child and (5) supporting bereaved families with their baby/child's death. Programmes received category 1 approval from the Nursing and Midwifery Board of Ireland (NMBI). The group worked collaboratively to meet this service need from Donegal to Limerick sharing expertise and resources and utilising videoconferencing to facilitate the delivery of the education programmes where appropriate. A core value of the group is to hold the child and family at the centre of all education and training programmes.

In September 2017, a regional children's conference 'Shaping our Children's Future Together' was organised through the CNME Mayo/Roscommon to bring a focus to the work undertaken with regard to nursing children in the region and to give nurses working with children in the region the opportunity to explore the Integrated Care Programme for

Children and the New National Children's Hospital in the context of their regional practice settings.

The group has now expanded exponentially into the 'Regional Children's and Young People's Nurse Education Group for HSE West, Mid-West and North West'. 'Young people' was added to the title to acknowledge the learning needs for nurses in the area of transition of children/young people into adult services. The group now includes representation from services in acute and community to reflect the National Integrated Care Programmes for Children, Sláintecare (2018), Health Service Executive National Service Plan (2018), and Saolta University Healthcare Group Strategy 2019-2023.

Specialist subgroups are convened on different occasions to stream line programmes to meet service need. Programmes are continually planned to allow for diary planning and individual CNME capacity. Health Service Executive (HSE) Nursing and Midwifery Quality Care- Metrics (QCM) for children, Intellectual disabilities and public health are used as a guide to inform the development of programmes.

The introduction of the Managed Clinical Academic Network (MCAN) in the Saolta University Healthcare Group for Women's and Children's Directorate (W & C) in January 2020 will bring closer working relationships across the Saolta University Healthcare Group through a collaborative approach to providing care with hospitals and specialities working together improving quality, outcomes and access. This will lead to group-wide policies and clinical pathways. Four of the five CNMEs on the Regional Children's and Young People's Nurse Education Group West/Midwest/Northwest are in the Saolta University Healthcare Group area. MCAN will bring further integration in education, research and training to improve the recruitment and retention of staff and support the development of highly skilled multidisciplinary teams. The 'Regional Children's and Young People's Nurse Education Group HSE West/Midwest/Northwest' is ideally placed to support this process as collaborative working and standardisation is a core value of the group since its inception.

Furthermore, the group acts as an influencer locally, regionally and nationally with regard to the the nursing care delivered to children and young people. Currently, several group members sit on national groups related to the nursing of children and young people such as the Children's Nursing Strategy National Steering Group, Children's Nursing Strategy Expert Nursing Group, and Senior Children's Nursing Network (SCNN) Steering Committee.

Aim of report

The aim of this report is to articulate the work of the group to support the continuing professional development of nurses and midwives caring for children and young people in the HSE West/Midwest/Northwest region.

Purpose of the group

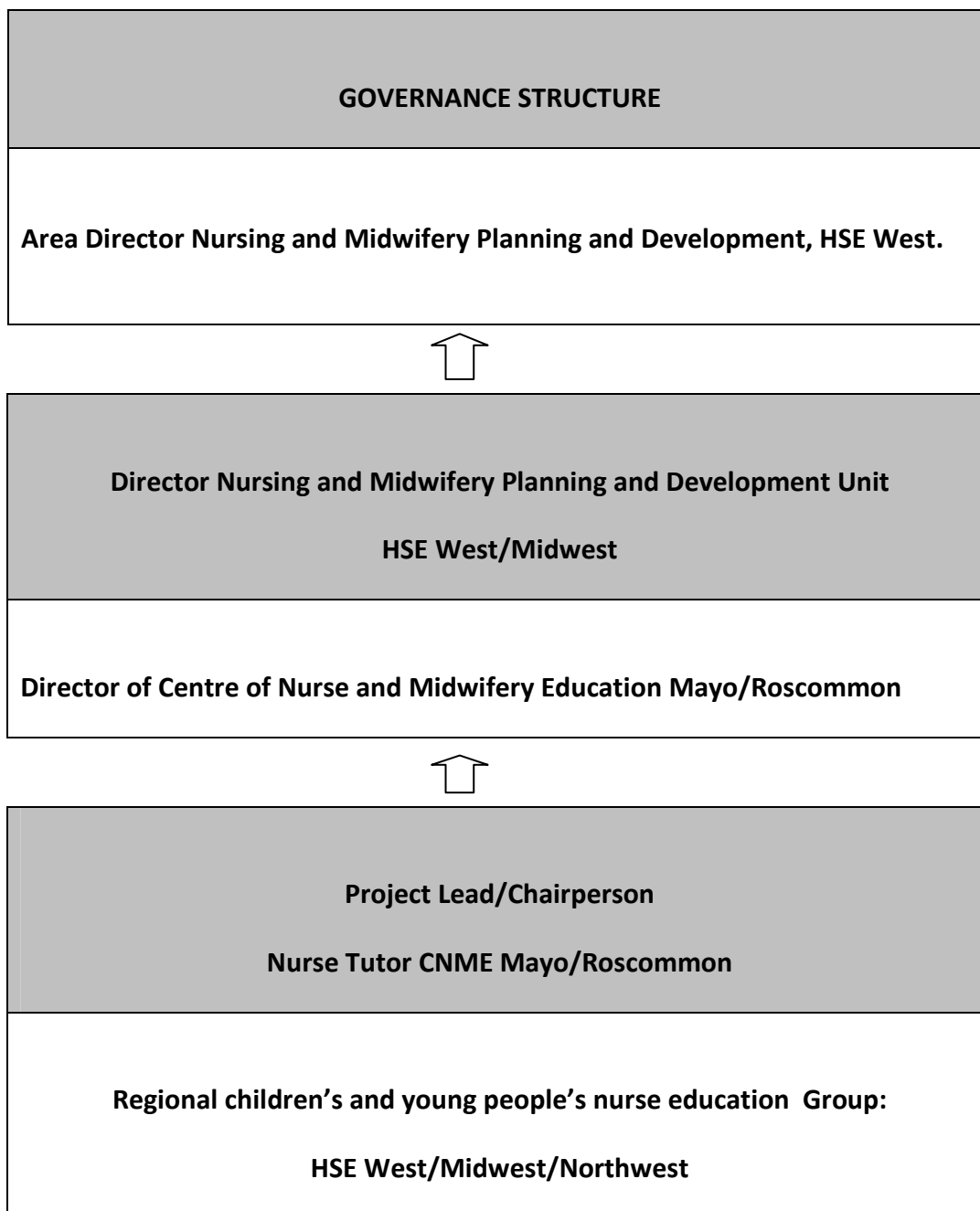
The purpose of this group is to strategically identify, develop, deliver, and evaluate programmes in response to service need and professional developmental needs of nurses caring for children and young people in the HSE West/Midwest/Northwest Region.

Objectives of the group

- Support and promote the continuing professional development of nurses involved in the care of children and young people in the HSE West/Midwest/Northwest region.
- Identify the needs of registered nurses/services that care for children and young people in the region.
- Collaborate to develop, deliver and evaluate continuing education and training programmes for Registered Nurses in relation to the care of children and young people in the region.
- Continue to develop a network of nurse educators with interest in the specific care of children and young people to meet the educational needs of nurses involved in the care of children and young people across the region.
- Foster collaboration between the Centres of Nurse Education in the region (HSE West/Midwest/Northwest) and Centre of Children's Nurse Education, Children's Health Ireland.
- Work with all relevant stakeholders in partnership to successfully promote the development, delivery and evaluation of education and training programmes.
- Be aware of local, national and international developments, which may influence the work of this group.
- Publish an annual report of the work of the group.

Governance

Governance Structure



NOTE: As the group evolves to meet service needs it will continue to consult with local, regional and national key stakeholders to ensure that its aim and objectives are aligned.

Membership of the group:

- Director of Nursing, Paediatrics Saolta University Healthcare Group
- Director of Public Health Nursing
- Director of Centre of Children's Nursing Education (CCNE)
Children's Health Ireland (CHI)
- Nurse Tutor (Children's) Centre of Nurse and Midwifery Education
Mayo/Roscommon (Project Lead)
- Educational representatives from Centre of Nurse and Midwifery Educations (CNME)
 - Mayo/Roscommon
 - Galway
 - Limerick, Clare, North Tipperary
 - Sligo/Leitrim/West Cavan
 - Donegal
- Practice Development Coordinator, Acute Services
- Practice Development Coordinator, Public Health
- Complex Needs Coordinator for Children
- Complex Needs Liaison Nurse for Children
- Clinical Nurse Specialist Life Limiting Conditions for Children
- Early Intervention Team Nurse
- Clinical and educational expertise as relevant to specialist area to be consulted as appropriate.

Responsibilities of Project Lead:

- Co-ordinate the strategic development, planning and delivery of programmes in consultation and collaboration with each CNME representative.
- Propose the agenda for each meeting and seek contributions from members on agenda items
- Ensure that the agenda and supporting materials are delivered to members one week in advance of meetings
- Clarify the purpose of each meeting and review the agenda at the beginning of each meeting
- Encourage broad participation of group members in the activity of the group.
- Convene subgroups and invite specialist personal as appropriate to support the group.
- Reports progress and concerns to the Director of the Centre of Nurse and Midwifery Education Mayo/Roscommon.

Responsibilities of Group Members

- Actively participate in meetings through attendance, discussion and review of minutes and other information. In the event of being unable to attend forward timely apology to the chair
- Meeting minutes will be recorded and provided by each member on a rotational basis.
- Act as a resource to the Chairperson and Project Lead
- Notify members of the group as soon as practical if any matters arise which may be deemed to affect the development of the work of the group
- Each CNME representative to feedback any decisions or actions to the Director of the Centre of Nurse and Midwifery Education they are representing
- Clinical representatives to feedback any decisions or actions to the services they are representing
- Review terms of reference annually.

The supporting structures and processes outlined above will be maintained and further enhanced to meet the future needs of this group.

Activity 2017-2019

Since 2017 the Regional Group has delivered 32 out of a suite of 33 education programmes. This section provides an overview of the activity for this period:

- 19 programmes have been developed by the Regional Group (See appendix 2), of which 18 of which have been delivered.
 - Further programmes are under development, for example, respiratory related programmes for acute services.
 - 10 programmes have been delivered in collaboration with other groups (See appendix 2).
 - 3 successful conferences have been held (see appendix 2)
 - One 4-day programme has been delivered through collaboration with University Hospital Limerick (see appendix 2).
- a) In total 1,902 attendees attended education programmes between 2017-2019. This represents attendance through five of the CNMEs involved in the Regional Group (see appendix 3a, 3b, 3c, 3d, 3e).

2017-2019	CNME Mayo/Roscommon	CNME Galway	CNME Limerick, Clare, North Tipperary	CNME Donegal	CNME Sligo Leitrim West Cavan	Total
Totals	1,116	222	234	297	33	1,902

- b) The number of registered children’s nurses that have attended is not recorded across all CNME sites therefore it is challenging to compare attendance between registered children’s nurses and nurses registered in other Divisions of the NMBI register. This may be reflective of the varying productivity reports and data collection systems within in each individual CNME.
- c) Health and social care professionals and medical professionals have attended the programmes which is reflective of the interdisciplinary nature of healthcare service provision for children and young people in the region. A significant representation from community is evident across all programmes (Appendix 3).
- d) The sharing of resources, personnel and expertise is being enabled and facilitated through the group within the region and nationally.
- e) A key success of the group is the availability of the Project Lead as a central point of contact to steer and co-ordinate the activity of the group.
- f) Nurses and midwives caring for children and young people can now access education and training within the HSE West/Midwest/Northwest region to meet their continuing professional development needs.

Opportunities

The following opportunities have been identified by the Regional Group for the future direction of education for nurses caring for children and young people:

1. Restructuring of services under the Sláintecare Implementation Strategy (2019).
2. The introduction of the Managed Clinical Academic Network (MCAN) in the Saolta University Healthcare Group in January 2020.
3. The expansion of the Learning Management System (LMS) through HSELand to all CNMEs may enable standardisation of data collected in the future. Appendix 3 outlines data that is returned to Office of Nursing and Midwifery Services Director (ONMSD) by the CNMEs. This would enhance the ONMSD returns if data pertaining to Childrens’ Nursing is included.
4. The establishment of Children’s Health Ireland (CHI) provides an opportunity to streamline the delivery of education programmes utilising technology, for example videoconferencing. Currently, video-conferencing facilities available through the CCNE and CHI are not compatible with regional CNMEs facilities. This limits access to tertiary specialist education for the region where this is appropriate.

5. As the Centre of Children's Nurse Education (CCNE) CHI is a member of the group, the group is in a position to raise education and training needs nationally that cannot be met locally or regionally and seek guidance and support (Appendix 3).
6. The growing demand for education and training for nurses and midwives working with children and young people across all healthcare settings within the region, the Regional Group is in a position to further build the capacity of, and capability of CNMEs and services to meet service need.

Challenges

The following challenges have been identified by the Regional Group for the future direction of education for nurses caring for children and young people:

1. Ensuring the registered nurse, who is not a registered children's nurse, caring for children and young people across all healthcare settings within the region is supported in their continuing professional development to meet their service needs.
2. There is a challenge in supporting access to continuing professional development for nurses working with children and young people due to the geographical spread of services within each CNME area, within the Regional Group's area.

Operational Plan 2020

The Regional Group agreed an operational plan for 2020, following a working day held on the 24th September 2019 in the CNME Mayo/Roscommon. The aim of the day was to review the cross regional learning needs analysis for 2020 and devise key educational goals for the group for 2020. The following is the operational plan for the group for 2020:

Acute services

- Diabetes in Children and young people programme (Saolta)
- Respiratory (Acute)
 - Fundamentals
 - Non-invasive ventilation, suctioning, airvo
- Neurology study day
- Fundamentals of care of the child and young person in Emergency department
- Child and adolescent mental health (CAMHS) subjects identified: self-harm and anxiety.

- Children and Young People Fundamentals Paediatric day to be developed building on the Paediatric overview day delivered in CNME Donegal.
- Programmes related to care of the deteriorating/critically ill child.
- To explore and develop a standardisation of a guideline and programme for Intravenous cannulation and venepuncture for children and young people for Saolta University Healthcare Group and University Hospital Limerick.
- National Oncology Shared Care Study Day CHI.

Community services

- Fundamentals Respiratory study day to be explored and developed
- Care and management of the child with Non-invasive ventilation, suctioning, airvo in the community study day.
- National one day programme continence management of the child and young person
- Enteral Feeding for children and young people
- Neuro-disability education to be explored.
- Child welfare and protection supervision programme
- National Life limiting programme (CLLA level 1 programme)

The following programmes will continue to be developed and delivered

- Resilience and Trauma Informed Practice in partnership with Tusla.
- The National Critical Care and Retrieval Services – Paediatric outreach programme for CNME Galway and CNME Mayo/Roscommon
- Bereavement/Loss in childhood study day in CNME Donegal.
- Medication management in children and young people programme.
- Paediatric High Dependency 4 day Programme (University Hospital Limerick) access for the Saolta University Healthcare Group

Recommendations

The following recommendations are outlined to facilitate education for nurses delivering care to children and young people.

- Maintain and further build strong links with local, regional and national groups.
- Continue to strengthen current processes such as bi-monthly meetings, communication processes, networks and interdisciplinary and interagency collaboration.
- Explore innovative means to build the capacity of, and capability of CNMEs and services to meet the growing demand for education and training for nurses and midwives working with children and young people across all healthcare settings within the region.
- Further explore video-conferencing capabilities between CCNE at CHI and CNMEs within the Regional Group.
- Explore digital mediums of learning to enable broader access to educational content across the region due to the geographical spread of services.
- Invite an academic adviser to meet the group following consultation and agreement through Regional Group's governance structure.
- Explore postgraduate education requirements in the short, medium and long term.
- The inclusion of Childrens' Nursing in the reports returned to the ONMSD.
- Group members and governance structure to continue to support Project Lead in his/her role.

Conclusion

Since the establishment of the Regional Group in 2017 nurses, midwives and other healthcare professionals have actively engaged with the group and its continuing professional development programmes. This has contributed to enhanced clinical practice through the development of policy and education. Critical success factors for this group include:

- The establishment of the Regional Group
- Collaboration between the Regional Group and the Centre of Children's Nurse Education, CHI
- The commitment and enthusiasm of the members of the group from the outset
- The outputs of the group:
 - 33 programmes available for delivery.
 - 32 have been delivered.
 - 1,902 attendees to the programmes across the region
- Engagement from health care professionals from primary care, community and acute settings
- The fostering of interprofessional and interagency professional relationships
- The evolution of the group as an influencer locally, regionally and nationally with regard to the nursing of children and young people.

In encouraging and supporting nurses and midwives to care for children and young people, it is critical that the process is as lean and efficient as possible. This report has taken into account the experiences of the past two years. It is anticipated that the group will further enhance the capability of nurses and midwives caring for children and young people while supporting the building of capacity in the HSE West/Midwest/Northwest region. The emphasis on the collaborative nature of this initiative between the Centres of Nurse and Midwifery Education, service providers, interdisciplinary and interagency working both in the acute services and community, while acknowledging individual and collective responsibility and accountability, is a key strength of the Regional Group. This will form the structure for a strong foundation for the future direction of children's nurse education in Ireland.

Acknowledgements

The group would like to thank Ms Mary Frances O'Reilly, Director NMPDU West Mid-West without whose vision and support the work of the group would not have been possible.

We would also like to thank:

Members past and present of the Regional Children's and Young People Nurse Education Group HSE West/Midwest/Northwest

Ms. Mairéad Loftus Project Lead Regional Children's and Young People Nurse Education Group HSE West/Midwest/Northwest

Directors of CNMEs across the region for their support and commitment

Ms. Carmel O'Donnell, Director of the CCNE Children's Healthcare Ireland

Ms. Naomi Bartley, Interim Director CCNE Children's Healthcare Ireland

The teams in each of the five CNMEs and CCNE CHI team for their support with the work of this group

Clinical Healthcare Professionals who have supported the development and delivery of the programmes.

Appendix 1

Terms of Reference

Regional Children's and Young people's Nurse Education Group

HSE West/Midwest/Northwest

Purpose

The purpose of the children's and young people regional education group is to strategically identify, develop, deliver, and evaluate programmes in response to service need and professional developmental needs of nurses working with children and young people in the HSE West/Midwest/Northwest Region.

Objectives

- Support and promote the continuing professional development of nurses involved in the care of children and young people in west/midwest/northwest region.
- Identify the needs of registered nurses and services that care for children and young people in the west/midwest/northwest region
- Collaborate to develop, deliver and evaluate continuing education and training programmes for Registered Nurses in relation to the care of children and young people in the region.
- Create and develop a network of nurse educators with interest in the specific care of children and young people to meet the educational needs of nurses involved in the care of children and young people across the region.
- Foster collaboration between the Centres of Nurse Education in the region (HSE West/Midwest/Northwest) and Centre of Children's Nurse Education, Children's Health Ireland.
- Work with all relevant stakeholders in partnership to successfully promote the development, delivery and evaluation of education & training programmes
- Be aware of local, national and international developments which may influence the work of this group.
- Publish an annual report of the work of the group

Governance

Governance of the group is Chairperson of Regional Children's and Young people's Nurse Education through the Director of the Centre of Nurse and Midwifery Education Mayo/Roscommon to the Director Nursing and Midwifery Planning and Development Unit, HSE West/Mid-West to the Area Director Nursing and Midwifery Planning and Development, HSE West

Membership:

- Director of Nursing Paediatrics Saolta University Healthcare Group
- Director of Public Health Nursing
- Director of Centre of Children's Nursing Education (CCNE) CHI
- Nurse Tutor (Children's) Centre of Nurse and Midwifery Education Mayo/Roscommon (Project Lead)
- Representative Centre of Nurse and Midwifery Education (CNME) –
 - Mayo/Roscommon
 - Galway
 - Limerick
 - Sligo
 - Donegal
- Practice Development Coordinator Acute Services
- Practice Development Coordinator Public Health
- Complex Needs Coordinator for Children
- Complex Needs Liaison Nurse for Children
- Clinical Nurse Specialist Life Limiting Conditions for children
- Early Intervention Team Nurse
- Clinical expertise as relevant to specialist area to be consulted as appropriate

Frequency of Meetings

Meetings will be held two monthly, via teleconference unless it is deemed necessary to meet face to face. If required sooner, to be agreed by consensus. Meetings will not last longer than 1.5 hours. A schedule of meetings will be agreed yearly. Meetings will be convened by the Project Lead (Chairperson). One face to face meeting a year.

Quorum

Minimum of 6 members (to include representation of a minimum of 3 CNMEs) must be in attendance for the meeting to proceed.

Responsibilities of Steering Group Members

- Actively participate in meetings through attendance, discussion and review of minutes and other information. In the event if unable to attend forward timely apology to the chair.
- Act as a resource to the Chairperson
- Meeting minutes will be recorded and provided by each member on a rotational basis.
- Notify members of the group as soon as practical if any matters arise which may be deemed to affect the development of the work of the group
- The Chairperson of the Group will feed back progress through Director of the Centre of Nurse and Midwifery Education Mayo/Roscommon.
- Each CNME representative to feedback any decisions or actions to the Director of the Centre of Nurse and Midwifery Education they are representing.
- Clinical representatives to feedback any decisions or actions to the services they are representing.
- Review terms of reference reviewed annually

Appendix 2

Continuing Professional Development Suite

Study Days

Study Days developed by the group:

1. Care and management of the child and infant on enteral feeding
2. Care and management of the child with complex health care needs with NIV, cough assist and airvo in the community
3. Care and management of the child with complex health care needs with a neurological condition
4. Continence and Enuresis management in the child
5. Supporting Bereaved families with their baby's/child's death 0-21 years
6. Pain management in child and young person
7. Asthma in children and young people
8. Childhood loss and grief (Donegal)
9. Childhood bereavement and loss: empowering families and healthcare professional (Mayo/Roscommon)
10. Paediatric Clinical Update
11. Biology of stress and science of hope film screening (partnership Tusla).
12. Biology of stress and science of hope: Introduction to adverse childhood experiences and trauma informed practice (partnership Tusla).
13. Management of diabetes in children and young people (Saolta)
14. Masterclass Diabetes in children (Limerick, Clare, North Tipperary)
15. Fundamentals of care of the child and young person in the Emergency Department
16. Integrated approach to eating disorders in children and young people: Regional approach
17. Medication management in children and young people
18. Fundamentals of care of the child with an additional needs
19. Venepuncture in children (Mayo/Roscommon)

Study Days delivered in collaboration with other groups:

1. Epilepsy Ireland: Epilepsy and administration of buccal midazolam
2. Positive behavioural support for the child and adolescent
3. National Transport/Retrieval Programme: outreach paediatric programme.
4. Informing families webinar
5. Best practice in weaning and growth monitoring training 0-5 years.
6. Masterclass in Dermatology across the lifespan
7. Foetal Alcohol Syndrome study day
8. Care of the infant/child with cystic fibrosis
9. National one day programme: continence management of the child and young person Community funded Schemes/Healthy Childhood Programmes/CNMEs
10. Sepsis: Maternal, Older person and Paediatric Infections and Sepsis (Community)

Conferences

1. Children's Conference: Shaping Our Children's Future Together Mayo (2017)
2. Obesity in childhood let the conversation begin Mayo (2018)
3. Marzipan conference Limerick (2018)

4-Day Programme

1. Paediatric High Dependency 4 day Programme (University Hospital Limerick)

The educational programmes listed reflect the programmes which have been supported through the group, and do not reflect specific local education and training which may have been delivered such as in-service programmes.

Appendix 3b Centre of Nurse and Midwifery Education Donegal

Date	Programme title	Attend	Other	Acute	Mental Health	ID	PHN/C RGN
2017							
17/05/2017	Continence & Enuresis	22	4			1	17
13/11/2017	Complex Needs- NIV	9	3	4		1	1
2018							
22/02/2018	Complex Needs- Neuro	15	4	2	3	5	1
27/02/2018	Childhood Loss & Grief	25	12	4	2	1	6
06/03/2018	Enteral Feeding (cancelled)	3					
05/10/2018	Paediatric. Clinical Update	22		22			
01/10/2018	Pain management	2	1	1			
2019							
17/01/2019	Positive Behaviour Support Autism	39					
28/02/2019	Enteral Feeding	16	6	2		5	3
03/04/2019	Childhood Loss and Grief	31	25				6
04/04/2019	Nat. Continence Programme.	15		1			14
/09/2019	Foetal Alcohol Syndrome	34					
14/10/2019	Diabetes in children and young people (Saolta)	14					
23/10/19	National Continence Programme	11					
06/11/19	Integrated care-eating disorders	12					
11/11/19	Resilience the biology of stress: Intoduction ACEs	27					
Total		297					

Appendix 3c Centre of Nurse and Midwifery Education Galway

Date	Programme title	Attend	Other	Acute	Mental Health	Maternity	ID	Primary Care	PHN/CRGN	AHP
21/5/2017	Care of the Child in the Emergency Department	4		4					4	
22/02/2018	Complex Child – Care and Management of the Child with Complex Health Care Needs. A Neurological Condition	2		1				1	2	
04/04/19	National Transport Medicine Programme: Outreach study day	11		11						
2/5/2018	Complex Child–Care and Management of the Child with Complex Health Care Needs Contenance and Enuresis Management of the Child	15		1				13	13	
1/10/2018	Complex Child – Pain Management in	6		6					6	
11/12/2018	Complex Child - Non-Invasive Ventilation airvo and Cough Assist study Day	16		9				7		

Date	Programme title	Attend	Other	Acute	Mental Health	Maternity	ID	Primary Care	PHN/CRGN	AHP
05/01/19	National Transport Medicine Programme: outreach programme	24		24						
01/05/19	National Transport Medicine Programme: outreach programme	23		23						
21/5/2019	ACE Resilience: The Biology of Stress and the Science of Hope	30		23		7			26	4
25/6/2019	Resilience – The Biology of Stress and the Science of Hope	17		17					11	6

Date	Programme title	Attended	Other	Acute	Mental Health	Maternity	ID	Primary Care	PHN/CRGN	AHP
19/06/19	National medicine retrieval programme: outreach study day	18		18						
24/9/19	National One Day Programme: Continence Management of the Child & Young Person	11						11	11	
14/10/19	SAOLTA: Management of Diabetes in Children and Young People	3		3					3	
22/10/19	Medication Management in C&YP	1		1					1	
24/10/19	Resilience – The Biology of Stress	15		15					9	6
6/11/19	Integrated Approach to Eating Disorders in Children and Young People: A Regional Approach	8							6	2
10/12/19	Resilience – The Biology of Stress	18								
Total		222								

Appendix 3d: Centre of Nurse and Midwifery Education Limerick, Clare, North Tipperary

Title of programme	Date delivered	Attendees
Paediatric High Dependency 4 Day Programme	29 th of March 2017 30 th of March 2017 5 th of April 2017 6 th of April 2017	9
Care of the infant/child with cystic fibrosis	15 th of September 2017	15
Paediatric High Dependency 4 Day Programme	27 th of February 2017 28 th of February 2017 4 th of October 2017 5 th of October 2017	11
Care and management of the child on Enteral feeding	11 th of October 2017	17
Paediatric High Dependency 4 Day Programme	18 th of April 2018 19 th of April 2018 25 th of April 2018 26 th of April 2018	11
Marzipan conference (Limerick)	30 th of November 2018	105
Positive behavioural support for the child and adolescent	17 th of June 2019 morning session 17 th of June 2019 afternoon session	10 12
Paediatric High Dependency 4 Day Programme	18 th of June 2019 19 th of June 2019 25 th of June 2019 26 th of June 2019	12
Masterclass-Diabetes in children (delivered in Limerick)	24 th of June 2019	20
National one day Programme: Continence Management of the child and young person	23 rd of October 2019	12
Total		234

Appendix 3e Centre of Nurse and Midwifery Education Sligo Leitrim West Cavan

Date	Title of Programme	Total
January 2019	Behaviours that Challenge	13
October 2019	Diabetes in Children and young people Programme	20
	Total	33

Appendix 4 Group Membership

Group Members 2019

Ms. Mairéad Loftus, Nurse Tutor (Children's) CNME Mayo/Roscommon – Project Lead/Chairperson
Dr. Fiona Hurley, Specialist Co-ordinator, CNME Limerick
Ms. Tricia Lafferty, Specialist Co-ordinator, CNME Letterkenny
Ms. Mary Connor, Nurse Tutor CNME Galway
Ms. Naomi Bartley, Director Centre of Children's Nurse Education, CHI – Crumlin (April 2018 – July 2019)/Ms. Carol Hillard ADON CHI – Crumlin/Representative
Ms. Claire Lynott, Complex Care Co-ordinator for children, Community Healthcare West
Ms. Helen Maeso, Early Intervention Team Liaison Nurse Mayo Early Intervention Team
Ms. Mary Breen, Paediatric Coordinator Complex Paediatric Cases Limerick/Clare & North Tipperary
Ms. Ann Matthews, CNM3 University Hospital Galway
Ms. Olivia O Connor, Practice Development Public Health Community Healthcare West
Ms. Anne Chambers, Specialist Co-ordinator CNME Sligo (joined January 2019)
Ms. Siobhan Horkan, ADON Portiuncula University Hospital (joined January 2019)
Ms. Helen McDaid, CNS Life limiting conditions for children North-West (joined January 2019)
Ms. Grainne Ryan, Director of Public Health CHO 3 (joined November 2019)
Ms. Helen Browne, Director of Public Health Mayo (March 2017- October 2019)

Group Members 2018

Ms. Mairead Loftus, Nurse Tutor CNME Mayo/Roscommon - Project Lead/Chairperson
Ms. Fiona Hurley, Specialist Co-ordinator Limerick
Ms. Tricia Lafferty, Specialist Co-ordinator CNME Letterkenny
Ms. Mary Connor, Nurse Tutor CNME Galway
Ms. Charlotte Hannon, Specialist Co-ordinator Sligo
Ms. Helen Maeso, Early Intervention Team Liaison Nurse Mayo
Ms. Helen Browne, Director of Public Health Mayo Community Healthcare West
Ms. Mary Breen, Paediatric Coordinator Complex Paediatric Cases Limerick/Clare & North Tipperary
Ms. Naomi Bartley, Acting Director Centre of Children's Nurse Education, Our Lady's Hospital for Children Crumlin (April 2018 – July 2019)
Ms. Claire Lynott, Complex Care Co-ordinator Community for Children Healthcare West (joined May 2018)
Ms. Anne Matthews, CNM3 University Hospital Galway Children's Unit (Ms. Jean Kelly's CDON Saolta University Healthcare Group nominee May 2018)
Ms. Olivia O Connor, Practice Development Public Health Community Healthcare West (joined November 2018)

Group Members 2017

Ms. Mairead Loftus, Nurse Tutor CNME Mayo/Roscommon – Project lead/Chairperson

Ms. Fiona Hurley, Specialist Co-ordinator Limerick

Ms. Tricia Lafferty, Specialist Co-ordinator CNME Letterkenny

Ms. Mary Connor, Nurse Tutor CNME Galway

Ms. Charlotte Hannon, Specialist Co-ordinator Sligo (February 2017-December 2018)

Ms. Helen Maeso, Early Intervention Team Liaison Nurse Mayo

Ms. Helen Browne, Director of Public Health Mayo (March 2017- September 2019)

Ms. Mary Breen, Paediatric Coordinator Complex Paediatric Cases Limerick/Clare & North Tipperary (joined May 2017)

Ms. Carmel O Donnell, Director of Children's Centre for Nurse Education, Our Lady's Children's Hospital, Crumlin (June 2017)

Ms. Geraldine Walsh, Early Intervention Team Liaison Nurse Mayo (August 2017-December 2017)

References

Department of Children and Youth Affairs (2014) Better outcomes Brighter Futures: The national policy framework for children and young people 2014-2020. Dublin, Government Publications.

Department of Children and Youth Affairs (2016) State of the Nation's Children: Ireland 2016. Dublin, Government Publications.

Department of Health and Children (2001) Report of the Paediatric Nurse Education Review Group. The Stationery Office, Dublin.

Department of Health (2013) "eHealth Strategy for Ireland" eHealth, Dublin. Available at <https://www.ehealthireland.ie/Knowledge-Information-Plan/eHealth-Strategy-for-Ireland.pdf>

Department of Health (2019) "Slaintecare Action Plan", Stationery Office, Dublin.

Government of Ireland (2017) Committee on the Future of Healthcare Slaintecare Report. Houses of the Oireachtas, the Stationery Office, Dublin.

Hardiman E. (2017) The Future of Paediatric Healthcare in Ireland. Available at: www.newchildrenshospital.ie/.../The-Future-of-Paediatric-Healthcare-in-Ireland-Subm...

Health Services Executive, Ireland (2015) The National Model of Care for Paediatric Health Services in Ireland. Dublin, HSE.

Health Service Executive Health Services Executive, Ireland (2016) Paediatric and Neonatology Clinical Programme: Review of Paediatric and Neonatology Services and Framework for Future Development. Dublin, HSE. Available at <https://www.hse.ie/eng/about/who/cspd/ncps/paediatrics-neonatology/>.

Health Services Executive, Ireland (2017) The Childhood Obesity Surveillance Initiative (COSI) in the Republic of Ireland: Findings from 2008, 2010, 2012 and 2015. Health Service Executive, Dublin. Available at; <https://www.hse.ie/eng/about/who/healthwellbeing/our-priority-programmes/heal/heal-docs/cosi-in-the-republic-of-ireland-findings-from-2008-2010-2012-and-2015.pdf>

Health Services Executive, Ireland (2018) Children's Services Nursing Workforce Planning National Supply and Demand Exercise, Health Services Executive, Dublin, Ireland.

Health Services Executive, Ireland (2018) National Summary Guidance for Nursing and Midwifery Quality Care-Metrics Data Measurement in Children's Services. Health Services Executive, Dublin.

Health Services Executive, Ireland (2018) Shaping the Future of Intellectual Disability Nursing in Ireland. Dublin, HSE.

Health Service Executive, Ireland (2018) The Healthy Childhood Programme. Health Service Executive Dublin. Available at: <https://www.hse.ie/eng/about/who/healthwellbeing/our-priority-programmes/child-health-and-wellbeing/nationalhealthychildhoodprogramme/>

Health Service Executive, Ireland (2019) National Service Plan. Available at <https://www.hse.ie/eng/services/publications/serviceplans/national-service-plan-2019.pdf>

Health Services Executive, Ireland The Integrated Care Programme for Children (ICP-C) Dublin, HSE. Available at <https://www.hse.ie/eng/about/who/cspd/icp/children/>

Irish Nurses and Midwives Organisation (2016) Children Nursing Survey Report. Irish Nurses and Midwives Organisation, Dublin.

Kilkelly U., Savage E. (2013) Child Friendly Healthcare, A report commissioned by The Ombudsman for Children. Available at <https://www.oco.ie/app/uploads/2013/11/ChildFriendlyHealthcareOCO.pdf>

Nuffield Trust (2016) The future of child health services: new models of care. Nuffield Trust, London. Available at <https://www.nuffieldtrust.org.uk/research/the-future-of-child-health-services-new-models-of-care>

Nursing and Midwifery Board of Ireland (2018) Children's Nurse Post Registration Education Programme, 2nd Edition. Dublin.

Office of Nursing and Midwifery Services (2016) Office of Nursing and Midwifery Services Director Plan 2016-2018. ONMSD: Dublin

Saolta University Health Care Group (2019) Saolta University Health Care Group Strategy 2019-2023 <http://www.saolta.ie/Saoltagroupstrategy>

United Nations (UN) (1989) Convention on the Rights of the Child. New York NY: United Nations General Assembly, New York.

World Health Organisation (2018) Standards for Improving Quality of Care for Children and Adolescents in Healthcare Facilities. WHO, Geneva. Available at https://www.who.int/maternal_child_adolescent/documents/quality-standards-child-adolescent/en/