

The Daisy Clinic

Neassa O'Malley CMM 2
Kate Johnson CMM 3

Community Midwifery Services



What is Homelessness?

-Roofless

-Houseless

-Living in insecure or inadequate housing



Citywest transit hub

-War in Ukraine

-International protection applicants

-Increase in unbooked women at late gestation

Background

Housing Crisis

Lack of data

Emergency
accomodation

Coombe
attendees 2022

Dedicated
Inclusion Health
MSW

Translation
required

No formalized
antenatal
pathway of care

What does the research say?

NICE National Institute for Health and Care Excellence

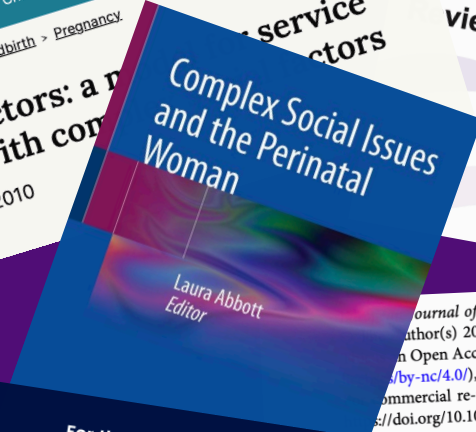
Search NICE...

Guidance Standards and indicators Life sciences British National Formulary (BNF) British National Formulary for Children (BNFC) Clinical Knowledge Summaries (CKS) About

Home > NICE Guidance > Conditions and diseases > Fertility, pregnancy and childbirth > Pregnancy

Pregnancy and complex social factors: a guideline [CG110]

Published: 22 September 2010



Maternal, Newborn and Infant Clinical Outcome Review Programme

Saving Lives, Improving Mother Care

Royal College of Obstetricians & Gynaecologists

Home > News

> Understanding the relationship between social determinants of health and maternal mortality

Understanding the relationship between social determinants of health and maternal mortality

10 Feb 2022

Journal of Public Health, 1-5

author(s) 2022. Published by Oxford University Press on behalf of the European Public Health Association.

An Open Access article distributed under the terms of the Creative Commons Attribution-NonCommercial License (<https://creativecommons.org/licenses/by-nc/4.0/>), which permits non-commercial re-use, distribution, and reproduction in any medium, provided the original work is properly cited.

For commercial re-use, please contact journals.permissions@oup.com

<https://doi.org/10.1093/eurpub/ckac167>

Perinatal mortality in Ireland: inequalities by socio-economic group and country of birth

Katie Duffy¹, Sheelah Connolly^{1,2}, Anne Nolan^{1,2} and Bertrand Maitre^{1,2}

What does the Daisy clinic look like?



-Continuity of Care



Information
Gathering



Convenient



-Language support



-Timely access to
services



-Time



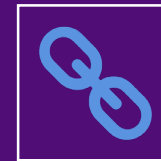
-Trauma informed
Care



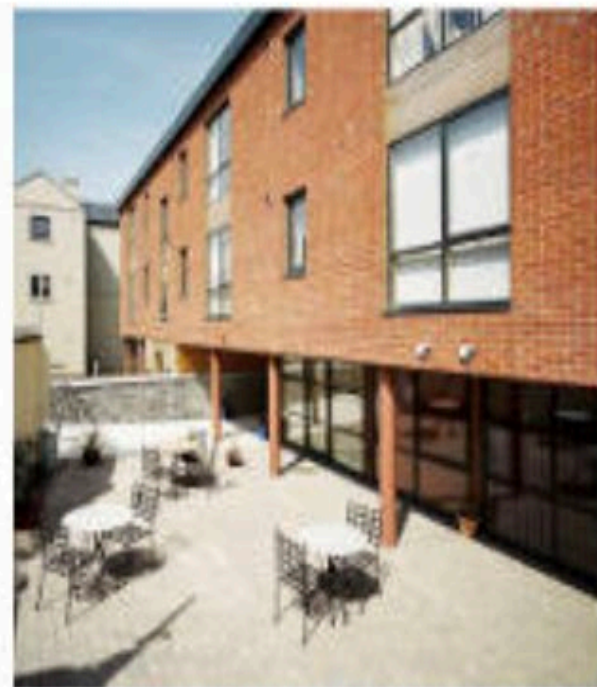
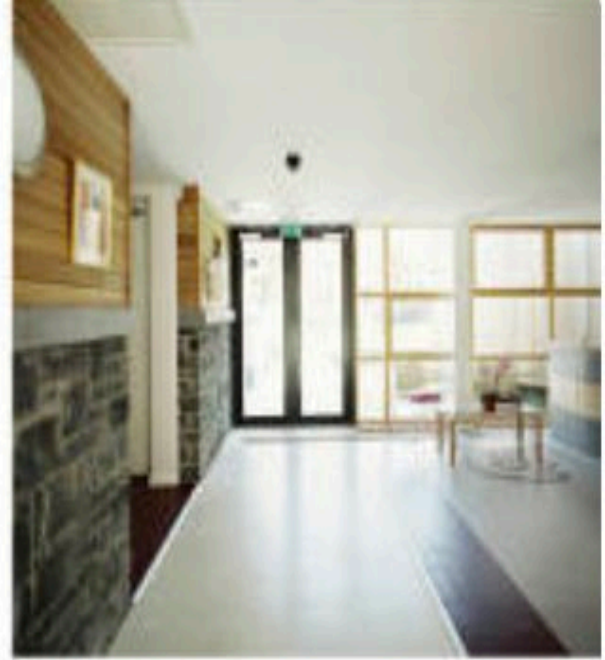
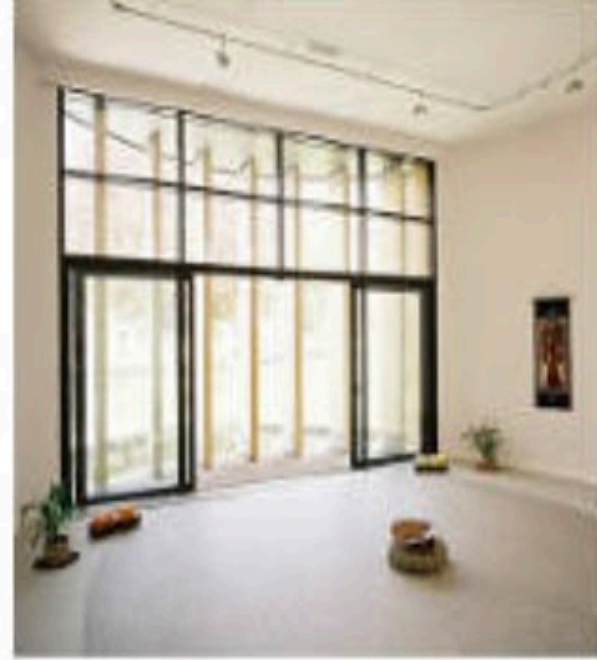
-Advocacy



-Calm environment



-Build links with
community services



Vision for the future!

- An inclusion health midwife
- A full Coombe Inclusion health MDT
- QIP initiatives
- Smooth referral pathways
- University links
- Further education and CPD
- Develop clear pathways of care

Thank you